



# TSA

Top Seal Advanced

## About Evercrete® TSA

Evercrete® Top Seal Advanced is a silicone based penetrative water repellent protective sealer for concrete and masonry.

## Where to use Evercrete® TSA

Evercrete® Top Seal Advanced has a variety of recommended uses such as sealing of concrete and masonry surfaces, as a decorative architectural finish, sealing of brick and block work, natural stone such as granite, marble, sandstone as well as timber. Evercrete® Top Seal Advanced can also be used in residential applications such as bathrooms, patios, decks, driveways, pathways and walls. Evercrete® Top Seal Advanced is excellent as an added layer of protection over Evercrete® DPS or Evercrete® Everwood applications. Consult your supplier for more information.

## Advantages of using Evercrete® TSA

- Water based and non-toxic.
- Water repellent.
- Water vapour permeability unaffected, allows concrete to breathe.
- Only one coat required.
- Leaves a clear, natural finish.
- Will not alter color, texture or any other physical characteristics of the surface.
- Surfaces that have been treated can be cleaned with water.
- Anti-Carbonation protection.
- UV resistant.
- Reduces efflorescence and freeze-thaw damage.
- Will reduce algae or mold growth.
- Prevents water staining on stone cladding and paving.



## Recommended Uses for:

- Natural stone such as granite, marble and sandstone.
- Decorative architectural finishes.
- Brick and blockwork.
- All concrete or cementitious structures.
- Highway structures.
- Building facades including mosaic and tile surfaces.
- Non-glazed tiled surfaces, such as floors, bathrooms and kitchens.

## Technical data

Water based:	yes
Specific Gravity Range:	1.01 – 1.11
Flash Point:	non-flammable
Non-toxic:	yes
pH Range:	10 ~ 12
Chemical Identity:	proprietary mixture, containing silicates, silicones, bonding catalysts and inserts

# "Concrete Solutions That Stand The Test Of Time"

## Application

### Surface Preparation

All surfaces to be treated should be fully cured, dry and free from mould oil, greases, previous coatings and laitance should be removed.

### Application

Evercrete® Top Seal Advanced can be used direct from the container, no mixing is required, but shake well before use. Do not dilute with water. Apply by low pressure spray or brush ensuring complete surface coverage.

On vertical surfaces Evercrete® Top Seal Advanced should be flooded on starting at the bottom, working steadily upwards.

On horizontal surfaces the material should be applied until the surface has a wet look for at least 5 seconds after application. It should not be excessively applied or cause ponding.

Do not apply to glass or aluminum surfaces, as etching will occur.

Clean up equipment with water after used.

Excess Evercrete® Top Seal Advanced will result in white dry powder on the surface and can be removed with dry cloth.

## Recommended Coverage

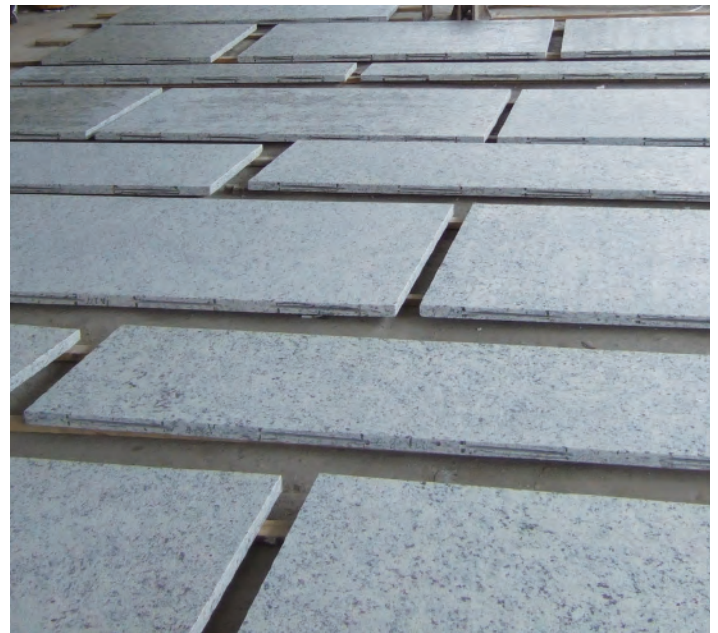
Coverage 15-35m<sup>2</sup> (approx. 150-350 sq.ft.) per US gallon (one coat). The coverage depends on the porosity of the surface treated and the surface absorption.

## Storage and packing

Store under cover, out of direct sunlight and protect from extremes of temperature. Shelf life is at least 12 months when stored as above in unopened containers.

Failure to comply with the recommended storage conditions may result in premature deterioration of the product or packaging. For specific storage advice consult Evercrete Technical Services Department.

5 US gallons / pail  
(18.925 Litres / 22 Kilograms)



For more information on Evercrete® products please visit our website at:

[www.evercrete.com](http://www.evercrete.com)

### Evercrete Corporation

Miami Center  
201 South Biscayne Blvd, Floor 28  
Miami FL 33131-4325  
USA  
Tel: 305 538-8321  
Fax: 305 538-8739

For distributors visit:

[www.evercrete.com](http://www.evercrete.com) [info@evercrete.com](mailto:info@evercrete.com)

**Evercrete** 