

About Evercrete® FMC

Evercrete® Flexible Modified Cementitious (FMC) is a two-component latex modified cementitious coating, which can be simply achieved by mixing a pre-packed dry-mixing powder with a formulated flexible latex admixture, and subsequent brushing the slurry on various substrates. It protects a wide range of buildings and structural concrete components with excellent resistance to water, aggressive chemicals, long-term weathering and scratching. It is applicable for those structures subjected to long-term water immersion.



Where to use Evercrete® FMC

- Interior and exterior sealing and waterproofing of walls and floors with protections from cement mortar.
- Applicable for both positive and negative sides of water-receiving substrates.
- Ideal waterproofing of walls and floors in tunnels, basements, water tanks, swimming pools, balconies, terraces and wet-rooms such as washrooms and bathrooms.
- Applicable for substrates subjected to shrinkage, vibration, movement, stress and minor crack formation.

- Appropriate substrates: concrete, brickwork, precast surface, lightweight blocks etc.
- It is free from casein, ammonia and harmful solvents thus is particularly suitable for use in smell sensitivity locations and areas with limited ventilation.

Advantages of using Evercrete® FMC

- Applicable under high humidity environment.
- Applicable for substrates with complex surfaces and shapes.
- Pre-packed component: fixed mixing proportion, ensure the quality of work.
- Good workability, simple brush paint.
- Easy to use.
- Non-toxic and environmental friendly.
- Rough surface, enhance the adhesion for rendering and tiling.
- Can be applied on damp surfaces.
- Anti-carbonation.

Technical data

Tensile Strength at 28 days	1.2 MPa
Elongation at 28 days	> 200%
Bond Strength at 28 days	0.5 MPa
Initial Surface Water Absorption	<0.005 ml/m ² /s
Water Impermeability (0.5MPa For 3 days)	~ 0 mm
Wet Density	1500 kg/m ³
Coverage per set (for 2mm thick)	13-14 m ²
Packaging (per set)	25 kgs powder + 18 kgs emulsion
Shelf Life	12 months

“Concrete Solutions That Stand The Test Of Time”

Application

Surface Preparation

Substrate must be free from grease, mould oil, rust, rusty metal, wood peels, paints, plastics, loose particles, contamination on any traces of foreign materials affecting the adhesion of Evercrete® Flexible Modified Cementitious (FMC).

Mixing and Application

Pre-soak the substrate with water.

Empty one container of admixture (18 kgs) for Evercrete® Flexible Modified Cementitious (FMC) into a bucket, pail or other suitable mixing vessel and stir gently with an electric mixer.

Add the dry-mix powder component (25 kgs) gradually to the admixture and avoid lump formation with mixing time of 5 – 7 minutes until a smooth consistent mix is achieved.

Apply the slurry onto the prepared substrate with a total thickness of 1.0 – 1.2 mm using a block brush, squeegee or roller in a 2-layer 2-direction. The second coat must be applied after the first coat is dried for approx. 3 – 4 hours.

Cement sand Mortar can be applied on the Evercrete® Flexible Modified Cementitious (FMC) as a protective layer.

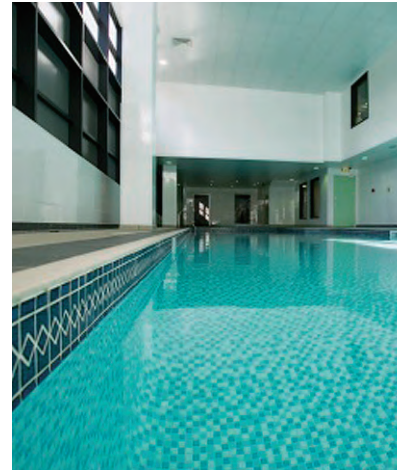
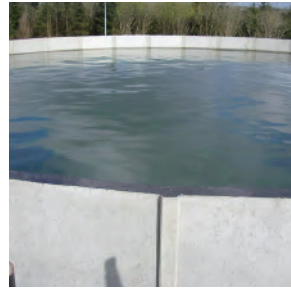
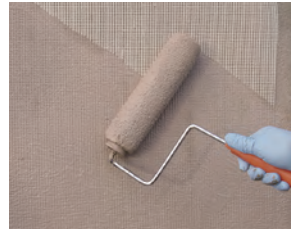
Curing

4-days natural air curing for Evercrete® Flexible Modified Cementitious (FMC) is required. Water leakage test can be started after 4 days curing. However, 7-days curing are recommended if extra

weight (e.g. tile or marble) is placed on top of the Evercrete® Flexible Modified Cementitious (FMC).

Storage and packing

Evercrete® Flexible Modified Cementitious (FMC) is delivered in 25 kgs bag of dry-mix powder with 10 or 18 kgs/pail of admixture. Shelf life is 12 months if the product is kept in a dry place with its original unopened bag and pail.



For more information on Evercrete® products please visit our website at:

www.evercrete.com

Evercrete Corporation

Miami Center
201 South Biscayne Blvd, Floor 28
Miami FL 33131-4325
USA

Tel: 305 538-8321
Fax: 305 538-8739

For distributors visit:

www.evercrete.com info@evercrete.com

Evercrete®

